

Camp Big Springs

Pick-up and drop-off accommodations must have been made prior with Camp Director to be on the transportation schedule.

STUDENTS MUST ACCOMPANY CAMP STAFF WHEN COMING AND LEAVING CAMP

Travel up Provo Canyon

Please plan up to 45min travel time from Provo.

Pick-up and drop-off times are:

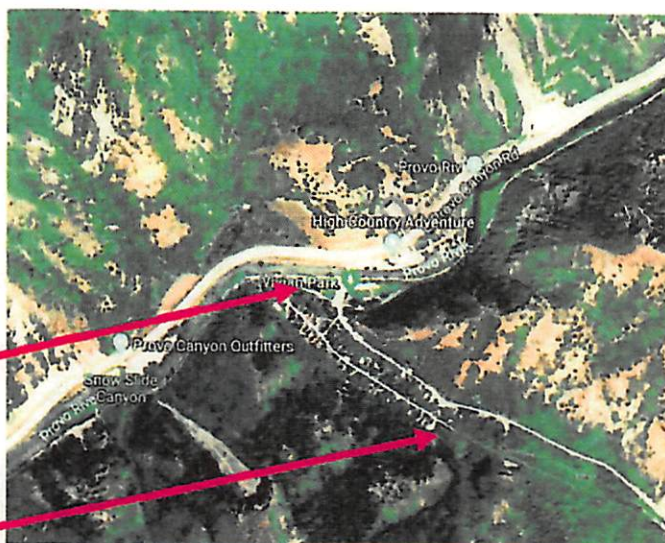
7:30-7:40am

and

4:30-4:40pm

Camp van will leave promptly!

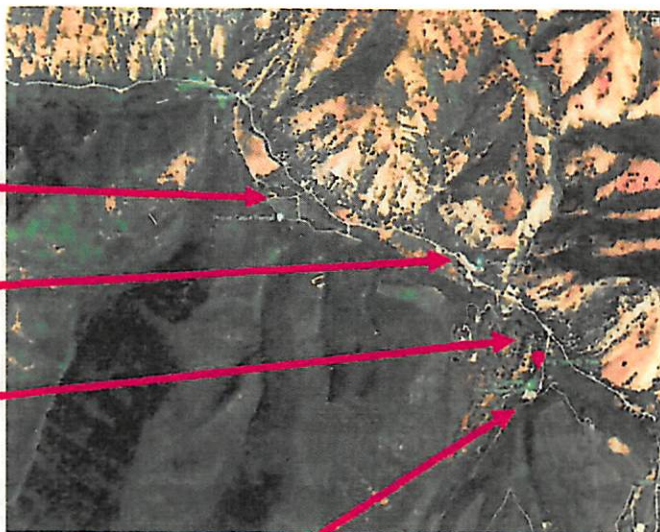
Turn right at Vivian Park



Stay on the main road

Continue past South Fork Park

Go past Conrad Ranch



In approximately 1/2 mile look for the Big Springs Park sign (on your right)
-Turn into to the park and follow road through the park to the metal gate at the very end parking lot.

For the safety and security of your child, **DO NOT SEND YOUR CHILD INTO CAMP UNATTENDED!**
STUDENTS MUST ACCOMPANY CAMP STAFF WHEN COMING AND LEAVING CAMP.

All arrangements must have been made prior with the Camp Director to get on the transportation schedule. When you arrive, please park and wait in the large upper parking lot next to the locked metal gate and camp staff will meet you there.

Pick-up and drop-off times are 7:30-7:40am and 4:30-4:40pm. Camp van will leave promptly. If you are late and miss the van, please call 801-374-4947 for new arrangements to be made.

Anyone not accompanying camp staff in and out of camp will be sent home for the remainder of the time.